

We let, you relax

*In 25 years the passion we hold for
property has grown our business into the
leading agent operating in our sector.
Talk to us to understand why...*

Penyards 
25 years Letting desirable homes since 1989

23 Southgate Street, Winchester, Hampshire SO23 9EB | Tel: 01962 860303 | www.penyards.co.uk

Friends of St Cross Hospital Winchester

Registered charity number 1143173


April 2014
NEWSLETTER



Contents

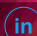


Foreword by the Chairman RICHARD CHISNELL	1
Restoring St Cross Meadows: A Glimpse of the Past MARTIN DE RETUERTO	3
Repairs and Conservation to the Church Tower LOUISE BAINBRIDGE	7
Canon Colin Deedes (1927–2013) HARRIET SAWBRIDGE	11
Revealing the Secrets of the Bowling Green DICK SELWOOD	12
Reg Sweet: Fifty Years a Priest BROTHER CLIVE MCCLEESTER	13
Brothers' News BROTHER CLIVE MCCLEESTER	14
Friends' Events 2013	16
New Friends since 1 January 2013	19
Acknowledgements	20



Competitive Prices

Quality & Excellence

We offer a complete range of Litho printing services.
We deliver your project on time, without compromising quality.
Find out for yourself why our customers tell us they will not use any other printer.

**Winnall Valley Road, Winchester
Hampshire SO23 0LN**
t: 01962 852622
e: print@culverlands.co.uk
w: culverlands.co.uk




01962 852622


ST FAITH'S PARISH HALL
Back Street, St Cross, Winchester SO23 9SB
Registered charity no. 1130671


Recently refurbished and full of light, this handsome Edwardian building, given by a former Master of St Cross to the parishioners of St Faith, contains two spacious halls.

Offering ample parking, St Faith's Parish Hall is the ideal local venue for children's parties, lectures, meetings and receptions.

To book please contact Sara Arnold,
Bookings Secretary: 07850 231497,
stfaithsph@secretgenius.co.uk

Foreword by the Chairman

RICHARD CHISNELL

Now that we have completed our second full financial year since the launch of the Friends of St Cross Hospital in September 2011, I am pleased to be able to report that our membership has passed 425 in just two and a half years. This is a great credit to all who hold the Hospital of St Cross close to their hearts. If we include joint or family and corporate memberships, there are now just over 700 Friends. So, my first, very pleasant duty is to thank all our Friends for helping to sustain the unique heritage of which we are all privileged to be a part.

We have, sadly, lost a number of members in the year, mainly through deaths, and we make a point of standing to remember them at the start of our AGM in May each year.

Our expanding calendar of events is now beginning to add a small surplus to our income each year. Membership subscriptions and occasional donations meant that we were able to increase our 2013 grant to the Hospital's Trustees to £12,500. With our 2012 grant of £9,000, this makes a total of £21,500 so far donated towards refurbishment and restoration projects at St Cross. The challenge now is to sustain this annual increase in our grant to the Trustees.



We were very pleased to assist the Hospital Trustees in launching a legacy scheme, and we hope that Friends will consider leaving a bequest to St Cross.

By the time this newsletter has been printed and distributed, we will have enjoyed our annual lecture, given this year by Dr Ralph Townsend in Winchester College's historic School building, as well as a special lecture by Dr Nicholas Riall about the restoration of the choir stalls in St Cross Church. Our April coach outing, our first this year, will also have taken place, to Chichester. Further coach outings, to Hampton Court Palace in June and to Wimborne and Kingston Lacy House in September, will provide good social-networking opportunities. This year's major fundraising event, the Friends' Summer Party on Friday 20 June, will we hope see up to 300 Friends enjoying a fine summer's evening in the Master's Garden, with a buffet supper and dancing.

Friends' Day, this year on Saturday 17 May, will commence with our second AGM at 2.15 pm in St Faith's Parish Hall. This will be followed by a short talk by Dick Selwood about the very successful dig undertaken by WARG on the Brothers' Bowling Green last August. Doreen Jenkins and her Hundred Men's Hall catering team will again provide a traditional English afternoon tea. As is now customary, Friends' Day will end with a service of Festival Evensong, sung this year by the Choir of St Cross Church with our highly respected Director of Music, Derek Beck. Your presence and support will be very welcome.

Derek will also be directing our third annual Friends' Concert on 18 October. The hunt is on for more potential performers with connections to the Friends. We know there is much musical, literary and artistic talent out there, and we need your help in finding it!

We are pleased with the way our online event-booking and payment service is working and I thank all who have been brave enough to use it. Isn't it amazing what one can do when one knows how! Quite a few members are unable to communicate electronically and we are of course happy to receive bookings and other information by telephone, by letter or in person.

On your behalf, I thank the Friends' Board of Trustees, all of whom also sit either on our Marketing Committee or our Finance and Administration Committee, for their hard work and support throughout another successful year. I urge any Friend who wishes to get involved in helping to run our expanding Friends' charity to contact either myself or our Treasurer, John Pringle. More hands make lighter work!

Meanwhile, we must continue to promote the Friends of St Cross Hospital to potential members so that they can join us and share in the fun. We need to attract more than 100 Friends over the next twelve months if we are to ensure the growth of our charity. Please recommend us to your own network of friends. We require only a quarter of our current Friends to attract one new Friend each to achieve our annual target. Thank you for your support and friendship.

Restoring St Cross Meadows: A Glimpse of the Past

MARTIN DE RETUERTO

Walking through the water meadows and parkland adjoining the Hospital of St Cross you will have noticed a very distinctive-looking group of animals grazing. These British White cattle, one of the oldest breeds in England, are the ideal inhabitants for this historic setting. They have become synonymous with the Hampshire & Isle of Wight Wildlife Trust's work in the Itchen Valley and the western gateway to the South Downs, where they form part of an extensive herd that is being used to manage this landscape of traditional water meadows and chalk downland. Their hardy and adaptable nature makes them perfectly suited to the enhancement of wildlife associated with these habitats.

At St Cross our British Whites have become part of the 'expectation' for many visitors, providing an endearing – and sometimes exciting! – addition to the beautiful setting. Grazing with traditional breeds forms part of the Hampshire & Isle of Wight Trust's Living Landscape vision for the Itchen Valley and the South Downs Gateway; an innovative and bold initiative to work with landowners to help stitch back together the landscape and the typical wildlife habitats that once characterised this culturally unique area.



British Whites in the parkland surrounding St Cross



A banded demoiselle in St Cross Meadows

Working in partnership with the Trustees of the Hospital of St Cross, and with Winchester City Council, which owns the adjoining St Faith's Meadow, the Trust has developed a restoration programme both to enhance the area for wildlife and to restore some of the cultural heritage that was once closely tied to the natural history of the valley. The Hospital's Trustees discussed this vision with us when they visited our Winnall Moors Nature Reserve, immediately to the north of Winchester, in 2010. Winnall Moors have some of the richest wildflower meadows in Hampshire and their historic floodplain setting provided a glimpse of how St Cross Meadows may have looked in the past, within their own, more extensive floodplain setting.

Discussions following our provision of a comprehensive management and restoration plan led to the Trust being invited to take an initial ten-year tenancy of St Cross Meadows and the farm buildings. The Trust is now embarking on its fourth season and a great deal of progress has been made. New stock fencing has been installed, the farm buildings have been cleared and scrub has been removed from the water-meadow carriers. Hay rich in wildflower seeds from Winnall Moors has also been spread. These are just some of the tasks that have been undertaken by Trust volunteers, but the British Whites are doing the rest!

Specialist contractors have been used for some parts of the restoration programme. In September 2012 the ornamental pond in the Master's Garden was de-silted – a once-in-a-generation operation. A sustainable use was identified

for the resulting river-derived silt, which was to incorporate it into the repair and enhancement of the riverbank in the adjoining meadow. Heavy visitor pressure, intensive grazing in the past and 'dog-dipping' had caused years of gradual erosion; according to anecdotal information, the riverbank had dropped by up to three metres.

The over-widened channel had lost many features typical of a chalk-bedded river. Visitors saw a silty, flat riverbed, limited flowing vegetation and a steep, eroding marginal edge. Repairs to the bank involved the creation of a new margin to encourage the establishment of typical wetland plants, such as reeds, sedges, yellow flag iris or purple loosestrife. Silt from the pond was used to rebuild and mould a more natural bank profile. Several hundred nursery-grown native plants, propagated using locally gathered seed, were planted in the soft silt. Their roots will help to bind the riverbank and protect it from erosion in future. As well as being more aesthetically pleasing, the rehabilitated riverbank is starting to become a far more beneficial environment for wetland wildlife. Summer displays of banded demoiselles are already testament to the success of this scheme.

The theme of wetland restoration has continued throughout the programme. Part of the historic water-meadow infrastructure has been rebuilt to provide a sluice that helps to distribute water from the stream that enters St Cross Meadows via St Faith's Meadow (known as the Lockburn Stream), with the result that the former ditch that follows part of the footpath through St Cross



Orange-tip butterflies mating on a cuckoo flower



Yellow rattle, seeded by 'green hay' from Winnall Moors

Meadows has been rewet. This is already providing both enhanced wildlife habitat and heritage interpretation on site.

In St Faith's Meadow the Trust has completed its removal of damaging, non-native poplars and willows that were planted as cash crops in the 1960s, mostly for matchstick timber. The introduction of these imposing trees in this period was one of the most misguided manmade changes to many of our lowland river valleys, and contributed to their decline and fragmentation. In the case of St Faith's Meadow these shallow-rooted trees had begun falling and were also beginning to pose serious health and safety concerns. Their removal, with the introduction of light grazing from the British Whites, will not only improve views towards St Catherine's Hill but will also gradually encourage the dormant wildflower seedbed.

The Trust's integrated management of St Faith's Meadow in conjunction with St Cross Meadows encapsulates our vision of the Living Landscape and demonstrates how one neighbouring site can complement another.

New volunteers for the Trust's regular work parties are always welcome and full training is provided. We particularly appreciate new members who join the charity and thereby help to support the Trust's work at St Cross and elsewhere in the Itchen valley and the South Downs. For more information please contact Rachel Remnant, Winchester Reserves Officer (rachel.remnant@hiwwt.org.uk).

Martin de Retuerto is Area Head of Conservation at the Hampshire & Isle of Wight Wildlife Trust

Repairs and Conservation to the Church Tower

LOUISE BAINBRIDGE

The majestic crossing tower of the Church of St Cross was completed in its present form in the 1380s, when John de Campden was Master. The tower's stonework and windows were inspected by steeplejacks at the last quinquennial survey in 2009, and the need for repairs was identified. The expense of providing safe access inside and out is considerable, and a comprehensive programme of repairs and conservation was proposed to make the most of this; works have just been completed.

The windows at high level have been re-leaded and their existing glass retained. Some pieces were signed in the 1850s. The roof has been re-covered, the rainwater pipes replaced and the stonework repaired. Badly eroded stones in the stringcourses and at corners have been renewed in Chicksgrove stone, which is shelly and durable, while a finer-grained French Richemont limestone has been used to piece in repairs to the carved window surrounds. Mortar repairs



Mortar repairs and new Chicksgrove stone corners have greatly improved the building's ability to resist weathering



have been made using hydraulic lime mixed with selected sands and stone dust, and the walls have been repointed where previous mortars had cracked and joints were open.

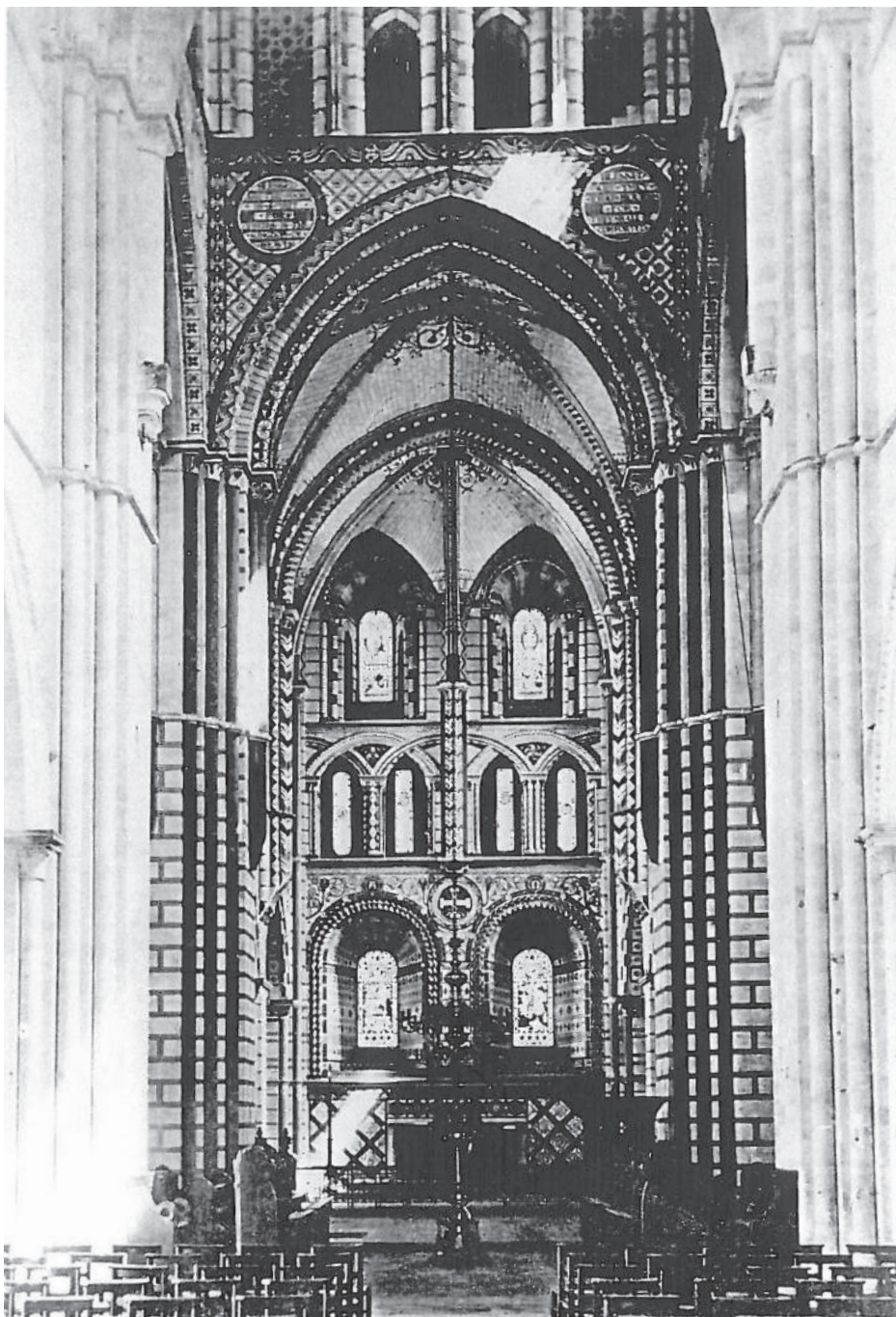
Inside the tower, the painted underside of the wooden ceiling has been cleaned, tannin stains drawn out, flaking paint re-fixed and the bell hatch touched in with matching colours. Samples of paints on the hatch had been sent for microscopic analysis prior to the works, and pigments found to match others from the nineteenth-century decorations by the architect William

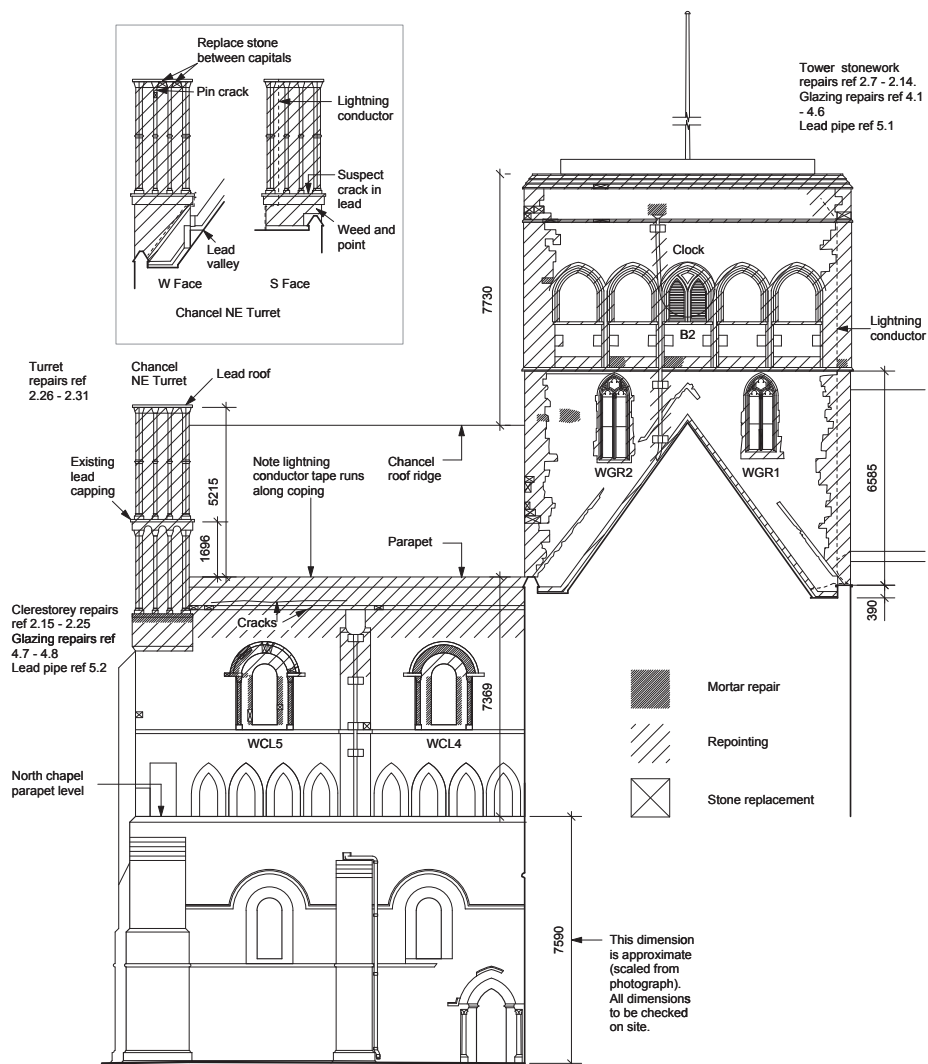


Butterfield. When the scaffolding was in place we could see that the painter Ric Smyth had left his name and the date 1865 high up on the wall plate. There is evidence of repairs made at this time to the earlier structure of the floor. We have added strengthening above to one side of the hatch, but otherwise the beams are in fair order, supported on the carved stone corbels built with the wall in the 1380s.

As can be seen in the photograph opposite, Butterfield's decorations extended down the walls with stripes in three colours marking out a

Top left and right: the painted underside of the wooden ceiling above the crossing before and after repair. Left: a window in the tower, its re-leading completed, awaits a new piece of French Richemont limestone. Opposite: the crossing's nineteenth-century decorations by William Butterfield





North Elevation of St Cross Church, showing repair and conservation work undertaken in 2013

masonry pattern. Much of this remains beneath a layer of distemper that was applied in 1923; this has now also been cleaned and repaired, and a new, matching distemper painted over.

The main contractor for these works was R. Moulding & Co., with internal finishes by McNeillage Conservation. Dr John Crook FSA made archaeological observations and Paul Tanner Associates advised on structure.

Canon Colin Deedes (1927–2013)

HARRIET SAWBRIDGE

It was with great sadness that we heard of the death of the much-loved former Master of St Cross, Canon Colin Deedes. Colin came to St Cross in 1980 and remained Master until his retirement in 1992.

Colin's was a varied career, which began in the Royal Marines. He came from a Christian, naval family; his father and brother were both in the Navy and his maternal grandfather and other members of his family had been priests. Although Colin enjoyed the Royal Marines enormously, in the end he realised that he would rather follow his faith as an ordained minister.

Colin first studied at St Bede's College, Durham, before training for the ministry at Salisbury and Wells Theological College. His curacy was at St James's, Milton, in Portsmouth. It was at this time that he met his future wife Nan, then a WREN. The chaplain at the submarine base asked Nan whether she might think of asking a young curate whom he had come across to accompany her to the HMS *Dolphin* Christmas Ball. Nan agreed and Colin readily accepted. They were married in 1958 at St James's, Milton, and moved immediately to the Parish of Worplesdon, near Guildford; it was there that their daughter Alison was born. A spell followed at All Saints, Weston Green, near Esher, where their daughters Lizzie and Rosie were born, and then a time at Fleet, before they moved to Bournemouth, where Colin was Team Rector at St Peter's, and then finally, to the Hospital of St Cross. Colin was Rural Dean three times in his career and an Honorary Canon at Winchester Cathedral from 1978.

At Colin's Thanksgiving Service at Winchester Cathedral in November, his daughter Rosie spoke memorably of the way her father's devotion to God was evident in every aspect of his life: 'Those conversations which I have had with Dad throughout my life, at important moments of change or decision making; the sharing of spiritual reading which we did, particularly latterly, as he was less

active in ministry, but even more active spiritually; the gentle rhythm of his prayerful life – these were the signs of holiness and wisdom; of a humble man who deeply loved God, his maker and redeemer; a man who was steeped in the scriptures and tradition of the Church; a disciplined man, loyal and obedient to his calling; in short a Man of God.'



Revealing the Secrets of the Bowling Green

DICK SELWOOD

The Bowling Green at St Cross has been hiding a secret for several hundred years. Four years ago the secret began to be revealed when resistivity (*geo-physics* if you watch *Time Team*) showed what appeared to be a large building. A small excavation by WARG, the society for Winchester Archaeology and Local History, uncovered a portion of the foundations of a large building. As the Bowling Green is regularly used for wedding receptions and other events, WARG put the turf back and left the site.

The work on the church tower in 2013 permitted a bigger excavation, which revealed a large building extending into the Brothers' graveyard. The size and layout of this building are similar to a hall at Wolvesey Castle that dates to the early twelfth century; the remains of the magnificent North Door have been dated by John Crook to the late 1130s. This is Henri du Blois's first building for his hospital. The grass is again over the foundations and WARG is working on a report on this and the other archaeological explorations that they carried out. There will be a presentation on the excavation at the AGM.

WARG would like to thank the Heritage Lottery Fund and the Master and Trustees of the Hospital of St Cross for their support.



Reg Sweet: Fifty Years a Priest

BROTHER CLIVE MCCLEESTER

On 15 December 2013 our Master, the Revd Reg Sweet, celebrated the fiftieth anniversary of his ordination. Reg was made deacon in 1962 in the newly consecrated Coventry Cathedral by the Bishop of Coventry, the Rt Revd Dr Cuthbert Bardsley, and ordained priest on 15 December 1963.

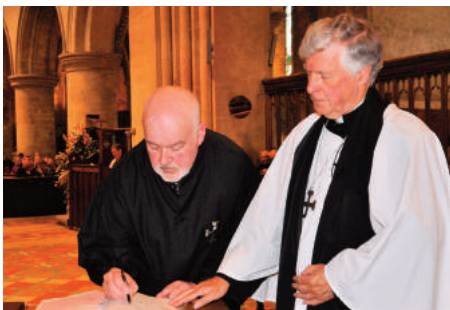
Two events were held to celebrate this Golden Jubilee. The first was a surprise lunch held by the Chairman of the Trustees, with guests from all the many areas of life to which Reg and Margaret have contributed so much. St Cross was represented by the Brothers and a number of Trustees, with parishioners from the Parish of St Cross with St Faith. Sir Charles and Lady Montgomery represented the Royal Navy; Captain John Hughes, the Honourable Company of Master Mariners; Commodore W. M. Walworth, the Anchorites; Captain Brian Waters, the Royal Fleet Auxiliary; and Lt Commander Benn Goulding, the Winchester Branch of the Mission to Seafarers. The Mayor and Mayoress of Winchester and the Dean of Winchester and Mrs Atwell also attended.

During coffee Brother Bevis Hillier gave a short congratulatory speech followed

by the cutting of a celebratory cake. Brother Ron Stacey, Senior Brother, proposed a toast and presented Reg with a pair of whisky tumblers and a silver tray suitably inscribed. Congratulatory greetings from HRH The Princess Royal were read out.

The second occasion, a Festival Eucharist, took place on Sunday 15 December, the anniversary itself. Reg presided, with other clergy – his daughter Lynette, his wife Margaret, the Archdeacon of Basingstoke representing the Bishop of Winchester, Bishop John Baker and the Revd Mark Birch – assisting. The Revd Canon Andi Hofbauer, Precentor of Wakefield Cathedral, preached. The service was followed by a reception in the Brethren's Hall.





BROTHERS' NEWS

The past year has seen three new Brothers gownned. **Brother Andrew Crowther-Walker** (left), gownned with Brother George last June, brings with him the gift of food and flowers. Having worked in the catering industry and holding senior positions in private homes and business institutions in London, he moved to Hampshire some twenty years ago to be Butler-Steward to the Earl and Countess of Portsmouth. After six happy years he moved to look after Hilary de Ferranti, where he stayed until his retirement due to ill health. Andrew has been a part of the team of flower arrangers at Winchester Cathedral for more than ten years and is currently Deputy Head. He says: 'I have settled into St Cross very quickly; my interests remain baking, flowers and the garden. Have you tried one of my shortbreads?'

Brother George Watkinson (centre) was born in Chelsea and moved to the Winchester area in 1986. He lived for thirty years in Basingstoke, working in the sound, video and electronics industry. His two daughters and his two wonderful grandsons are his pride and joy. George has many interests, including classical and light music, cinema and learning to play the guitar – properly! He considers himself blessed to live at St Cross with its beautiful and historic surroundings, and in the Parish of St Faith, with its friendly and hospitable inhabitants.

Brother John Turner (left) was gownned in September and installed in December due to the conservation works –

probably a first to be done in that way! He writes: 'My formative years were spent on the family farm at Rudge, on the Wiltshire-Somerset border. I was born in the farmhouse in Somerset while my father was milking the cows across the farmyard in Wiltshire! I was educated at the local secondary school, and went on to read theology and philosophy at the University of Lancaster. I then undertook postgraduate studies at the Universities of Exeter and Oxford. I took up teaching in an inner-city tower-block comprehensive in Manchester. Fortunately, I soon learned more than just survival in the classroom and never looked back. After Manchester I held various positions of significant responsibility at senior schools in Bedford and Bath. Uprooting myself to St Cross has proved the ideal way for me to start a new lease of life. I can spend more time with my books and my music, and can discuss all things biblical and ecclesiastical. I also plan to undertake more writing, on the understanding



that nothing will be published until after my death! My life as a Brother is already proving to be a rich one, fecund with much fun and fellowship. It is certainly not one I intend to waste.'

Brothers also welcomed the Master and Brothers of the Lord Leycester Hospital, Warwick (*below*), and enjoyed visits to the Isle of Wight (*top left*) and Osborne House, to Garter Day at Windsor Castle (*top right*), and to Henley Royal Regatta (*above left*). A special and memorable day was a visit to Tedworth House (*above right*), one of four Recovery Centres, run by Help for Heroes, which form part of the Defence Recovery Capability. The Masters of the Historic Almshouses also spent the day at St Cross as guests of the Master.





FRIENDS' EVENTS 2013

Top left: at the **Friends' Lecture** Steve Taylor spoke about almshouses with special reference to St Cross and Ewelme. *Top right,* *above left:* on **Friends' Day** Tom Beaumont James MBE spoke about royal Winchester before tea and evensong sung by the Choir of Winchester Cathedral. *Above right,* *right:* outing to **Stratford-upon-Avon**. *Below left:* outing to **St George's Chapel, Windsor**. *Below right:* outing to **Dorchester Abbey**.





Top left and right, above left and right: the annual **Friends' Summer Party** took place on a beautiful summer's evening in the Master's Garden. Right, below left and right: under the expert direction of Derek Beck, the annual **Friends' Concert** at St Cross Church in October continued to show the wealth of talent among our Friends. Choirs, soloists, readers, flautists, organists, pianists and even an electric guitarist featured in the exciting line-up.





New Friends since 1 January 2013

Neil and Julie Adams
 Julia Anderson
 Piers and Susan Armstrong
 Adrian Babbidge
 John Barker
 Kathryn Barton
 Carol Bianchi
 Jonathan Bliss
 Tony and Vicki Bonner
 Karen Borley
 Oliver Burberry
 David Butler
 Malcom and Andrea Campbell
 Robert and Patricia Case
 Martin Castledine
 Brother Andrew Crowther-Walker
 Elaine Curtis
 Carolyn Davies
 Nicholas and Caroline Dennis
 Alison de Winter
 Ian Duncan
 Peter Eagling
 Brian and Jennifer Eames
 Catherine Gaze
 Michael Gibson
 Peter and Mary Grant
 James Hall
 Julian and Jennifer Harvey
 Alice Higham
 Joyce Henderson Kellaway
 Catherine Johnson and Donald
 Clancey
 Gareth and Ann Jones
 Mary Jones
 Ruth Jordan
 Helen Kennedy
 John and Tamara Kirk

Peter Krakenberger
 Barny and Gloyn Lees
 Ann Leyland
 Keith and Sally Loudon
 Carolyn Mahoney
 Christine Mills
 Colin and Kate Mills
 Dodie and Harry Mowat
 Barry and Elizabeth O'Connell
 Martin Orton
 Sue Osman
 David and Marion Oswald
 Peter and Jane Parsons
 Craig Peterson
 Valerie Pile
 Susie Purvis and David Robins
 Clive Redgrove
 Richard Ridout
 Michael Rowlands
 John Salcedo
 Brian and Asia Sherwood
 John Switzer
 Sybil Thomas
 Brother John Turner
 Mary Tutton
 Beryl Voltzenlogel
 Christine Walters
 Eleanor Waterhouse
 Brother George Watkinson
 Helen Wells
 John Wort

Corporate Friends
 The Queen Inn
 Rooster Digital
 The Thomas Wheelkes Singers

Acknowledgements

The Friends of St Cross Hospital Winchester are grateful to Penyards Lettings & Management for generously funding the cost of printing this issue of the Friends' Newsletter.

They would also like to thank Brother Clive McCleester (front cover, pages 11–17, inside back cover), Martin de Retuerto (page 3), Alex Cruickshank (page 4), Ben Rushbrook (page 5), Jon Oakley (page 6), Louise Bainbridge (pages 7–10), Andrew Lumsden (page 16: second row, left) and Peter Sawbridge (pages 1 and 18) for kindly allowing their excellent photographs to be used.

Issue 5 of the Newsletter of the Friends of St Cross Hospital Winchester
Copyright © Friends of St Cross Hospital Winchester, 2014
Compiled and designed by Harriet and Peter Sawbridge
Printed by Culverlands Press Ltd, Winchester

For all enquiries please contact
Friends of St Cross Hospital Winchester
Porter's Lodge Office
Hospital of St Cross
Winchester SO23 9SD
E-mail: friends@stcrosshospital.co.uk
www.friendsofstcross.com

Registered charity number 1143173